

Our Mission

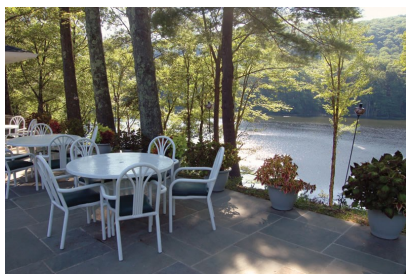
To PRESERVE town artifacts, historical data and buildings.

Preservation always requires an investment. We invest our time and energy. Please consider supporting our mission! Our annual fundraiser is an enjoyable social occasion and enables us to continue our work.

SAVE THE DATE!

Saturday July 27th 2013

6:00—9:00 PM



Inn at Dover Furnace Cocktail Party & Silent Auction

Watch our web site at
www.townofdovernyhistoricalsociety.org
for ticket sales

Town of Dover Historical Society, Inc.

The Society meets in the Historic Tabor-Wing House, on the National Register of Historic Landmarks, at the intersection of Route 22 & North Nellie Hill Road in Dover Plains, NY, a short walk to the Dover Stone Church, the J.H. Ketcham Fire House and Ketcham's Corners. The building is also currently used for special events.



Town of Dover Historical Society, Inc.

Route 22 & N Nellie Hill Rd.

PO Box 185

Dover Plains, NY 12522

www.townofdovernyhistoricalsociety.org

History

Thomas Tabor built the Tabor-Wing House c1815 for his daughter, Sally, who married Mahlon Wing. Sally and Mahlon raised their eight children there. Their descendants continued to live in the house until 1928.



continued to live in the house until 1928.

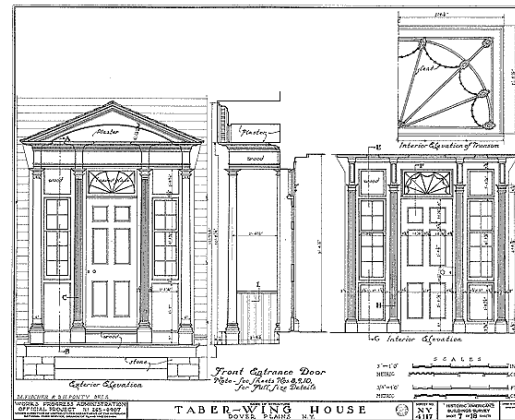
In 1976 the Historical Society purchased the building and began the restoration and registration process.

For many years this building housed the Dover Public Library. In 2003 the Society turned the building over to the Town of Dover but continues to use it as a meeting place and raise funds for restoration work.

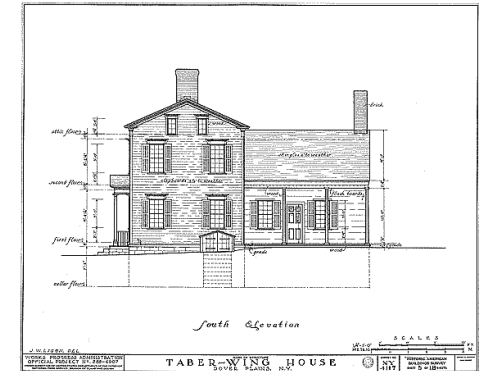
Preservation work is ongoing and requires constant attention. Current projects include repair of the sill plates and dentil molding as well as some roof work. In 2012 Iroquois Pipeline awarded a grant to the Historical Society to restore the building. With this grant, money from the town and fundraising efforts by the Historical Society, Phase One of a much-needed restoration is set to begin.

Architecture

The Tabor-Wing House is a rare and significant frame residence of the Federal Period which retains an unusually high degree of physical and design integrity. The house exhibits the architectural preferences and practices characteristic of the regional Hudson Valley vernacular tradition. Distinguished for its exceptionally fine architectural details, the structure reflects the social prominence maintained by the Tabor and Wing families in Dover during the early nineteenth century. The exterior details are unusually fine, of a level normally reserved for cabinetry and interior moldings.



When built, this house was one of the most architecturally prominent houses in eastern Dutchess County, reflecting the social position of its builder, Thomas Tabor. That many such frame structures have been lost through fire, demolition, decay or alterations places this house in a limited class of survivors.



Both its association with Dover's pioneer families and its architectural merit give this building significance. Distinguishing features are the arched leaded glass windows and two narrow windows on each side of the front door, the palladian window on the second floor, dentil moldings in mantels and cornices and a decorative crown roof on the front entry porch. The hand-hewn roof trusses are held together with wooden pegs. Each fireplace and mantel are original to the house. The kitchen fireplace is the same as when Sally used it, complete with a bake oven. The copper sink remains in the kitchen. Some doors still have original hand-wrought iron hardware.

Town of Dover Historical Society, Inc.

Route 22 & N Nellie Hill Rd.

PO Box 185

Dover Plains, NY 12522

www.townofdoverhistoricalsociety.org